

# How to Install Movies on Your System

## Step 1:

**If your computer has this already installed then you can proceed to the next step.**

First you must download software that will allow you to convert a DVD so it will play in a format that your system will understand. The format that your system will understand is .WMV. ET Center using Windows Media Player technology to play its movies. If Windows Media Player can play your movie then ET Center will also.

You can find and download this software from a company called [Slysoft](#). This is the best software that I have found to allow you to convert these movies. They have several products, but the ones that you will need to be able to convert your movies is [AnyDVD](#) and [CloneDVD Mobile](#).

[AnyDVD](#) works in the background to automatically remove the copy protection of a DVD movie as soon as it's inserted into the drive, allowing you then to backup the movie using a DVD backup tool such as [CloneDVD Mobile](#).

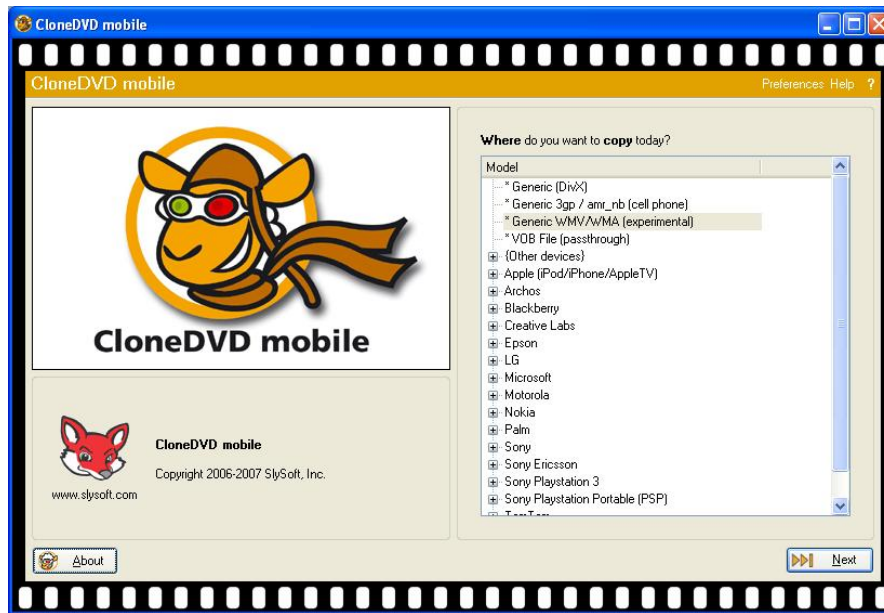
[CloneDVD Mobile](#) then can be used to convert your DVD movies quickly and easily into a format that your ET Center will be able to use. You can also use this software to convert movies to be able to play on your portable device.

## Step 2:

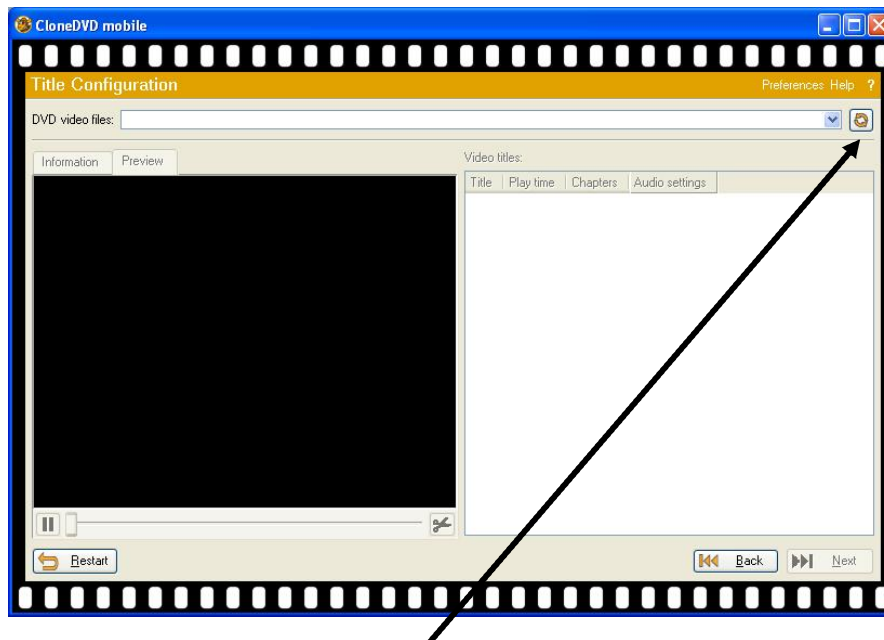
Now it is time to burn that movie for your system to read.

- Insert DVD Movie into you DVD player on your computer (DVD Player is required to be installed on your computer for this to work).
- After DVD Movie is installed then proceed to open CloneDVD Mobile.

# How to Install Movies on Your System

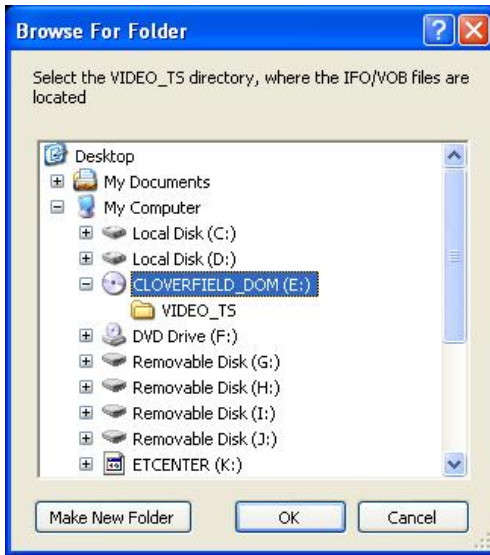


- The following screen should be on your computer. Please select Generic WMV/WMA (experimental). Then click the next button.

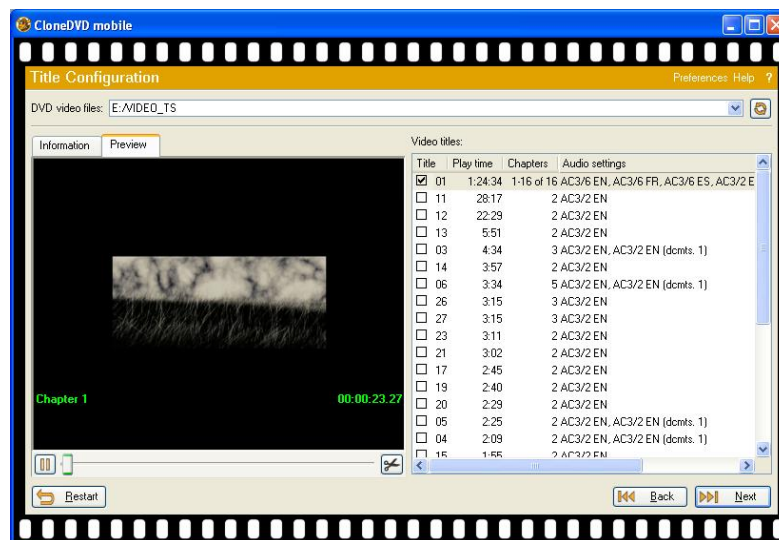


- On this screen you will need to click the button indicated by the arrow above.

# How to Install Movies on Your System

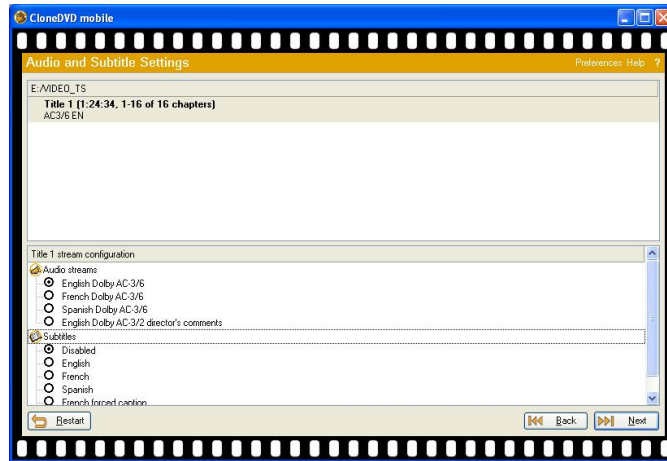


- The following window will appear. Please select the movie. In this example the movie is Cloverfield. The movie will be located on your DVD drive letter. If for some reason you cannot locate your movie then close CloneDVD Mobile and restart your computer. Sometimes this will work. Please select the OK button

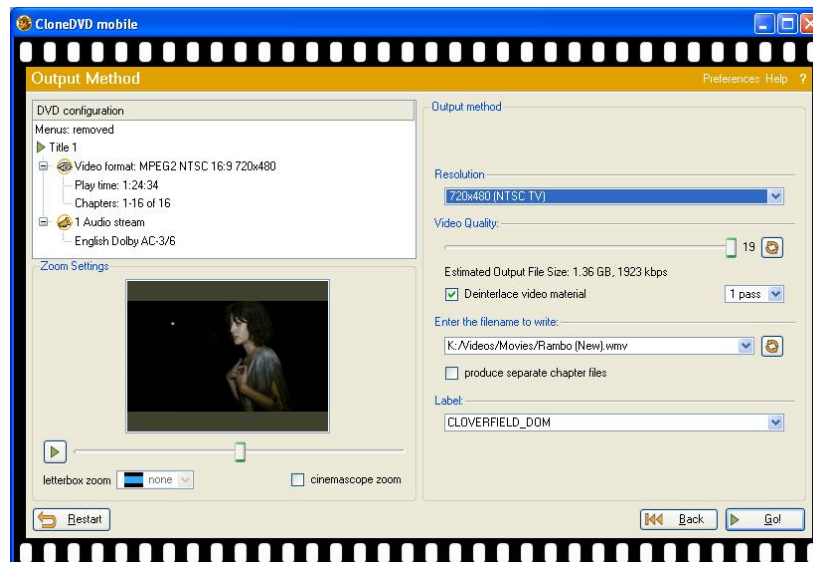


- In this window you will see several options it will also show you a preview of what you are about to burn. Most of the time it is always the first item and it will always be checked. It will always be the one with the longer playtime. Click next.

# How to Install Movies on Your System



- In this window you do not have to do anything just click next.



- In this window you need to change a couple of things.
  - Change the resolution to 720x480 (NTSC TV)
  - Make sure the video quality slide is all the way to the right.
  - Enter the filename and location where the movie is to be stored. This is where all your ET Center movies are installed on your network. Make sure you name the movie to what it is in this example it would be Cloverfield.

# How to Install Movies on Your System

- Now you can hit the GO Button and that is it. A typical movie will take anywhere from 1 hr to 2 hrs depending on your movie size and your DVD player speed. As it is downloading you can start access it in ET Center almost immediately.